



**EYELAND  
DESIGN NETWORK**



## Awards

25th ASCRS Annual Film Festival, San Diego:  
Runner-up Award for Eyeland Design  
Network. Title: Envisioning Beauty

eHealthcare Leadership Awards: Platinum  
Level Award. Best Special Effects for vision  
simulator animations.

THE GLOBAL AWARDS:  
Finalist Certificate Title: The View Through  
the Artist's Eyes, Category: Brand Reminders

Finalist Certificate Title: Eyesight -  
Ophthalmic Patient brochure, Category:  
Consumer Brochure

ESCRS/Alcon Film Festival Paris, France  
Title: Posterior Chamber Verisyse Lens  
Implantation, Category: Special Cases -  
Second Prize

Winner - The Rx Club - New York: Award  
of Excellence Title: The View Through the  
Artist's Eyes, Category: Brand Reminders

Winner at the Ophthalmic Photographers  
Society at the ASCRS Symposium, San Diego  
in several categories

What the Judges think



**EYELAND  
DESIGN NETWORK**



What We can do for YOU

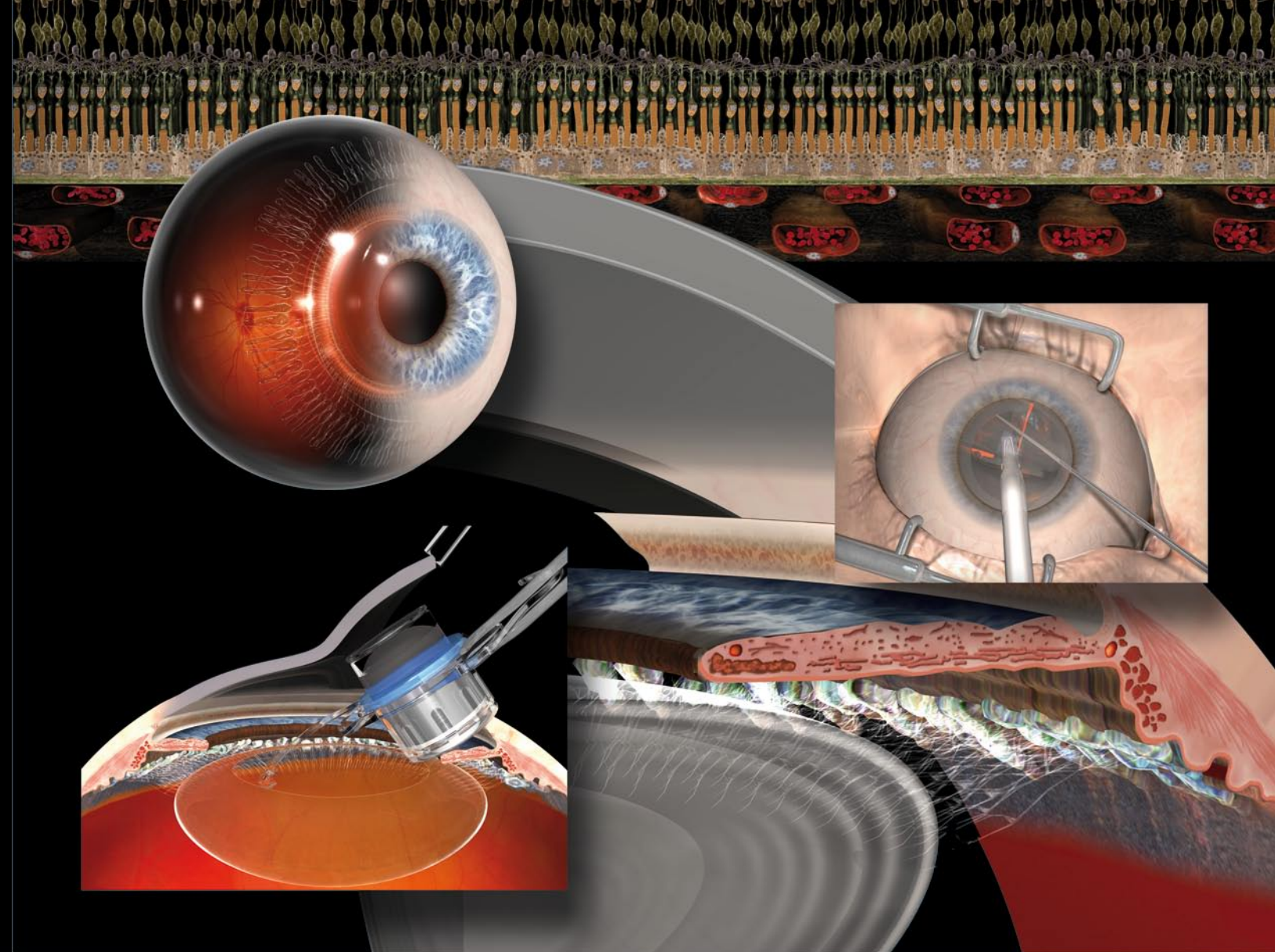
Our clients are the leading eyecare provider worldwide

...what about **you?**





Beauty and Science without Limits

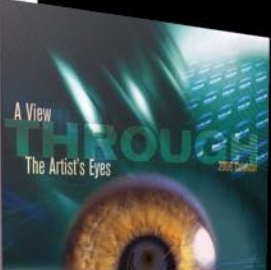
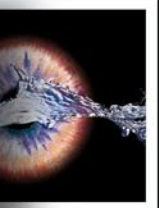
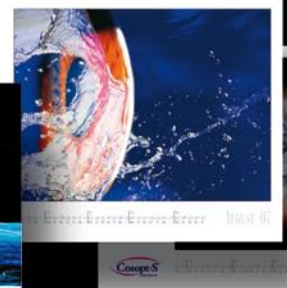


Unique Details in All Dimensions



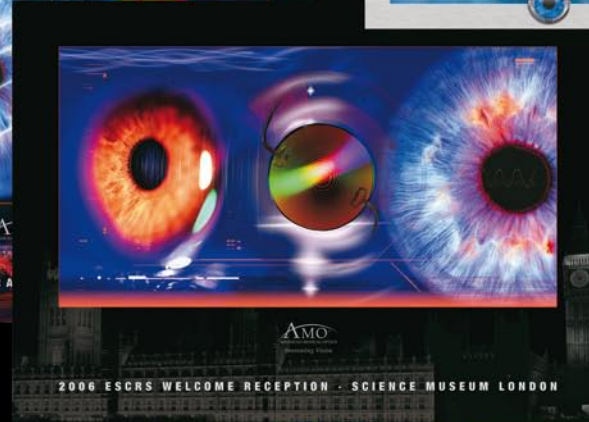
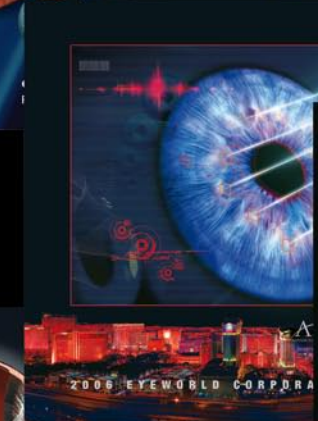
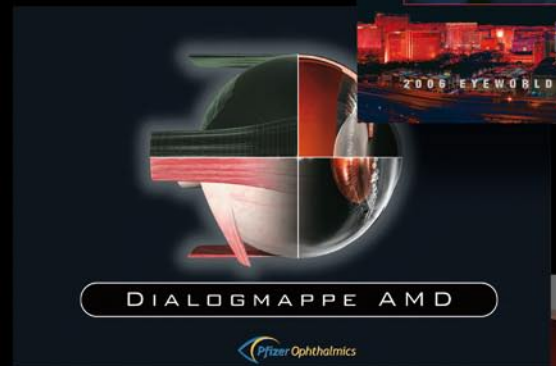


- CALENDARS
- POSTERS
- BROCHURES
- COVERS
- AND MUCH MORE...



Print & Artwork

More information at: [www.eyeland-design.com/print](http://www.eyeland-design.com/print)



Print & Artwork





- EDUCATIONAL & EMOTIONAL MOVIES
- CD & DVD PROJECTS
- INTERACTIVE PRESENTATIONS
- SCIENTIFIC ANIMATIONS



## Multimedia & Educational Applications

More information at: [www.eyeland-design.com/msdvs](http://www.eyeland-design.com/msdvs)

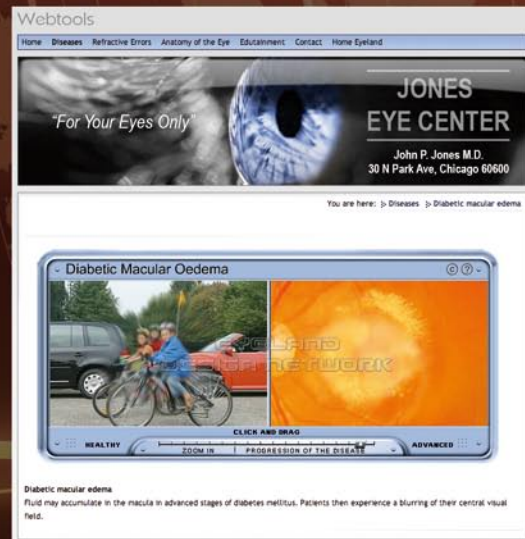


## Multimedia & Educational Applications

More information at: [www.eyeland-design.com/movies](http://www.eyeland-design.com/movies)

01:47:26





**Presbyopia**  
A presbyopic eye has a progressively diminished ability to focus on near objects with age, most likely caused by a loss of elasticity of the crystalline lens and the loss of strength in the ciliary muscles which bend and straighten the lens. Presbyopia often occurs at the age of 40-45, when we lose the ability to see up close without reading glasses or bifocal lenses.

Edutainment



World beyond glasses and contact



**Nearsightedness (Myopia)**  
A nearsighted eye is too long in relation to its corneal curvature, or has a cornea that is too curved for the length of the eye. This causes light rays to come to a point in front of the retina. Instead of on the retina. Nearsighted people can usually see well up close longer than normal sighted people, but nearsighted people usually lose the ability to see close up by their late teens or early twenties.



- ➔ INTERACTIVE SIMULATIONS
- ➔ FLASH STREAMING VIDEOS
- ➔ VIDEO WEBTOOL INTEGRATION IN YOUR WEBSITE
- ➔ EDUTAINMENT
- ➔ VIDEO LIBRARY

# Patient Education for Your Website

More information at: [www.eyeland-design.com/webtools](http://www.eyeland-design.com/webtools)

# Patient Education for Your Website

More information at: [www.eyeland-design.com/videowebtools](http://www.eyeland-design.com/videowebtools)



HELPING MORE PATIENTS SAY 'YES'



The image displays the LVC Counselor software interface, which is designed for patient education about LASIK. The interface includes a main menu with options like 'Your Eye Center', 'Your Eye Clinic', and 'Your Eye Doctor'. It also features a 'Payment Plans' section and a 'Back to Selections' button. The software is presented in a box set with a CD-ROM, showing a large eye graphic and the text 'PREMIUM LASER VISION CORRECTION PATIENT EDUCATION SOFTWARE' and 'LVC COUNSELOR'. A hand is shown holding a coupon for 25% off, and a smartphone displays the software interface.

...TO LASIK!

LVC & IOL-Counselor are developed in cooperation with

**PEC**  
PATIENT EDUCATION CONCEPTS, INC.

Patient Education Software

More information at: [www.lvccounselor.com](http://www.lvccounselor.com)

More than  
4000 active users  
within first  
2 years

...TO PREMIUM IOLS!



The image displays the IOL Counselor software interface, which is designed for patient education about premium IOLs. The interface includes a main menu with options like 'Your Eye Center', 'Your Eye Clinic', and 'Your Eye Doctor'. It also features a 'Payment Plans' section and a 'Back to Selections' button. The software is presented in a box set with a CD-ROM, showing a large eye graphic and the text 'PREMIUM IOL PATIENT EDUCATION SOFTWARE' and 'IOL COUNSELOR'. A hand is shown holding a coupon for 25% off, and a smartphone displays the software interface.

Patient Education Software

More information at: [www.iolcounselor.com](http://www.iolcounselor.com)





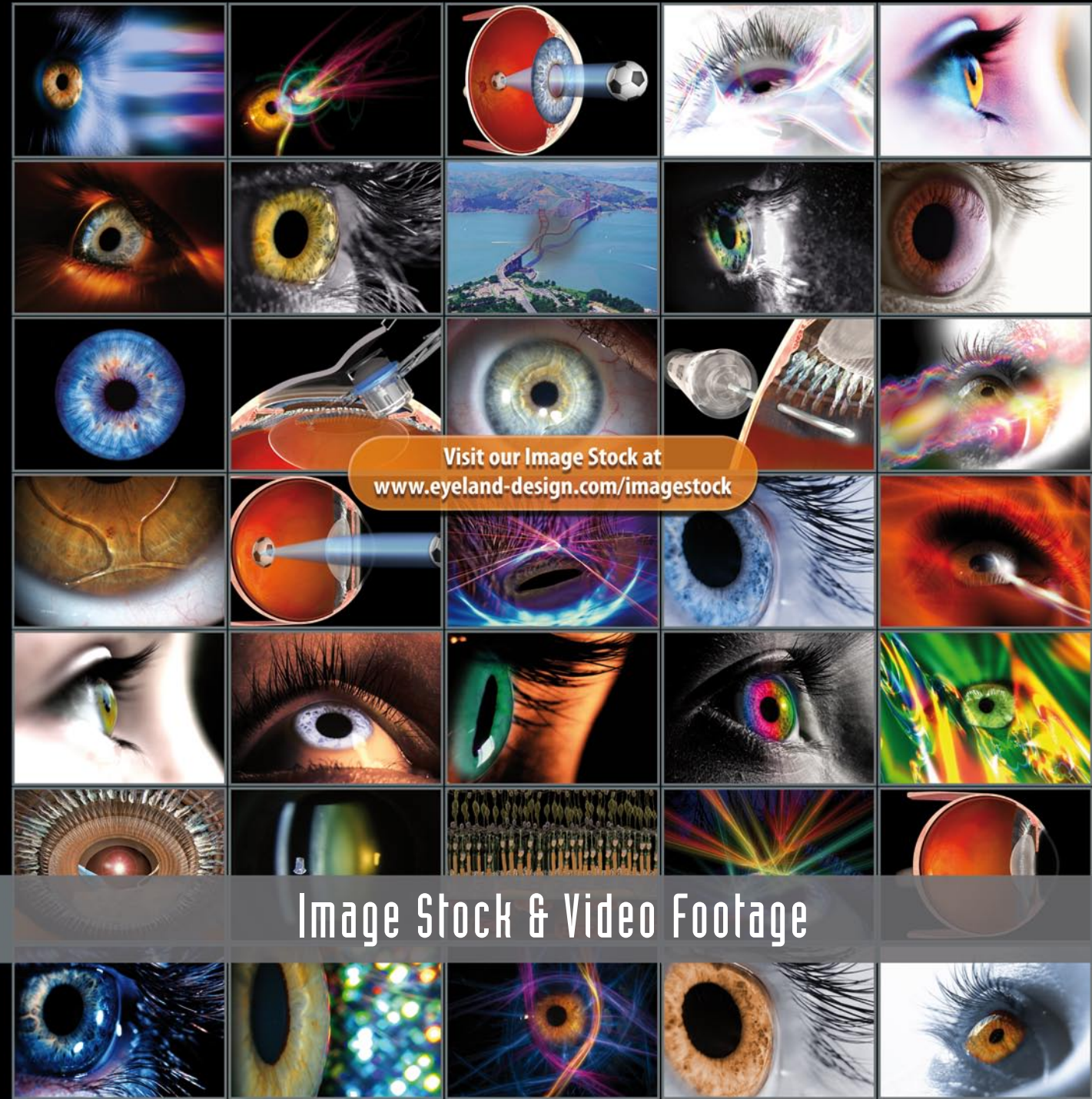
→PRODUCT CATALOGUE  
→INTERACTIVE SIMULATIONS

Visit our Image Stock at  
[www.eyeland-design.com/imagestock](http://www.eyeland-design.com/imagestock)

Customized Applications

Image Stock & Video Footage

More information at: [www.lricalculator.com](http://www.lricalculator.com)





## What we can do for you



GRAPHIC DESIGN



PATIENT EDUCATION



MULTIMEDIA/SOFTWARE



PRODUCT MARKETING



3D-EYE ANIMATIONS



SCIENTIFIC PRESENTATIONS

## All the Eyes you will ever need®

[www.eyeland-design.com](http://www.eyeland-design.com) · [www.eyeland-design.com/imagestock](http://www.eyeland-design.com/imagestock)  
[www.eyeland-design.com/practicetools](http://www.eyeland-design.com/practicetools) · [www.iolcounselor.com](http://www.iolcounselor.com)\*  
[www.lvccounselor.com](http://www.lvccounselor.com)\* · \*in cooperation with PEC, Patient Education Concepts, Inc.



© Eyeland Design Network GmbH  
 All images contained in this publication are owned by Eyeland Design Network and are protected by international laws! All rights reserved for all countries. Unauthorized use prohibited.

## Who we are and what we do



Karl Brasse, MD  
*Ophthalmic Surgeon  
 Photographer*

Guido Schulte  
*Senior Art and  
 Creative Director*

Curt-W. Flakowski  
*Architect  
 3D Art Director*

Rene Paradies  
*Architect  
 3D Art Director*



**EYELAND  
 DESIGN NETWORK**

Butenwall 22 · 48691 Vreden · Germany · Phone: +49 2564 93339 · Fax: +49 1803 62222912936  
 Email: [info@eyeland-design.com](mailto:info@eyeland-design.com) · Web: [www.eyeland-design.com](http://www.eyeland-design.com)